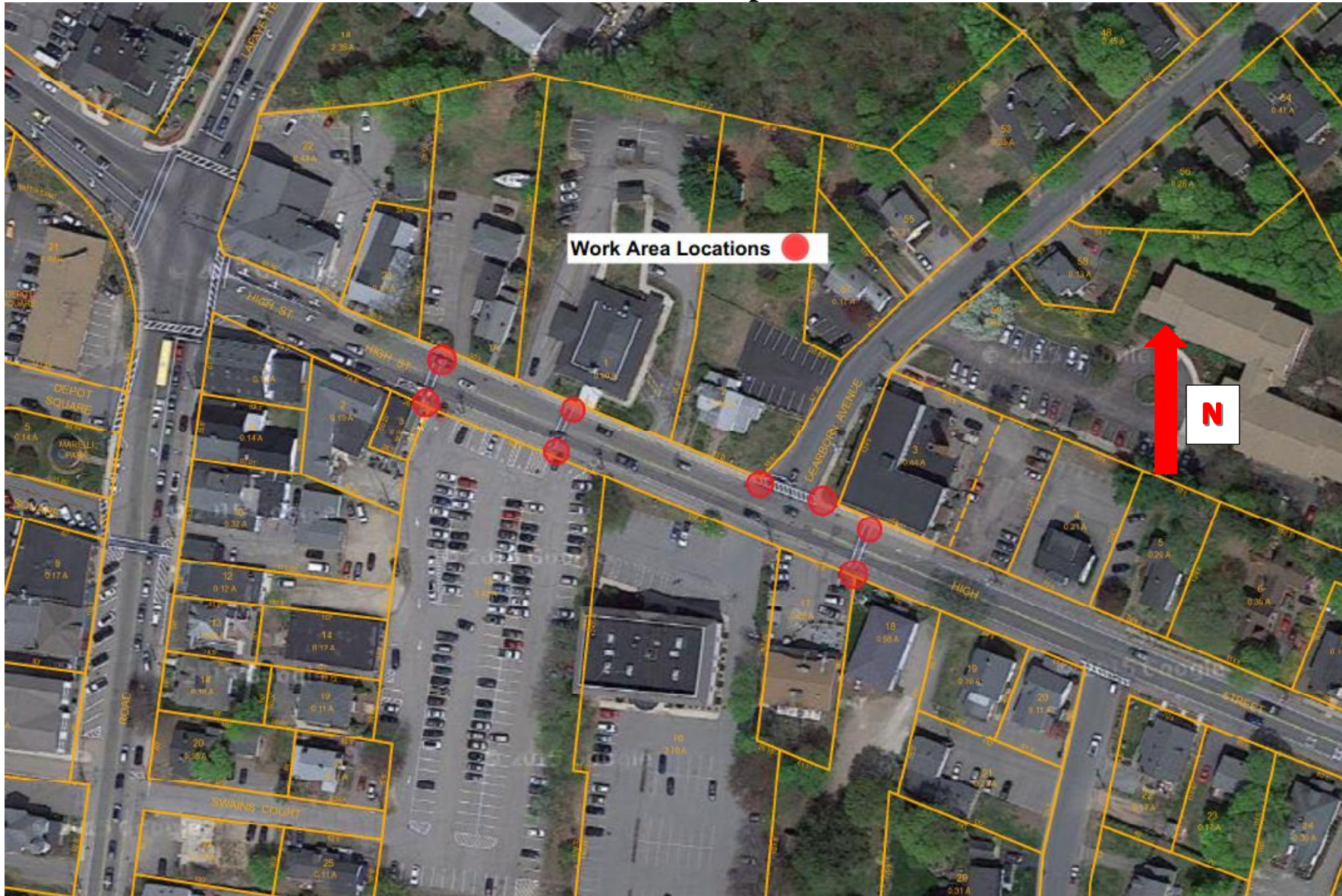


# Attachment A: 2016-011 Sidewalks (Re-Bid) Part A - ADA Improvements





## Attachment A: 2016-011 Sidewalks (Re-Bid) Part A - ADA Improvements



### **North Side:**

Sawcut pavement. Remove concrete walkway and curb. Install concrete flush landing area, ramp to the west and curbing (Type C). Concrete will be replaced flush to driveway apron. Install detectable warning panel.

### **South Side:**

Sawcut pavement. Remove concrete walkway to building in order to construct concrete ramp to the west (Type C) and concrete ramp to the south (Type C) and curbing. Install detectable warning panel in direction of travel across High Street.

## Attachment A: 2016-011 Sidewalks (Re-Bid) Part A - ADA Improvements



### **North Side:**

Cross walk location will be moved to the west to allow for construction of landing area and ramp such that the area in front of the stairs remains flat. Sawcut pavement. Remove concrete walkway and curb. Install concrete flush landing area, with concrete ramp (Type C) to the west and concrete ramp (Type C) to the east and curbing. Install detectable warning panel.

### **South Side:**

Sawcut pavement. Remove existing bituminous walkway and curbing to construct new flush concrete landing with concrete ramp (Type C) to the west and curbing. Area will remain flush to the east to the driveway. Install detectable warning panel in direction of travel across High Street.



**Attachment A: 2016-011 Sidewalks (Re-Bid)  
Part A - ADA Improvements**



**North Side:**

Sawcut pavement and remove curb and sidewalk along High Street and Dearborn Avenue. Construct flush concrete landing area at crosswalk location with concrete ramp (Type C) to the east and concrete ramp (Type C) to the north with curbing. Install detectable warning panel.

**South Side:**

Sawcut pavement and remove curb and sidewalk along High Street and Dearborn Avenue. Construct flush concrete landing area at crosswalk location with concrete ramp (Type C) to the east and concrete ramp (Type C) to the north with curbing. Install detectable warning panel.

**Attachment A: 2016-011 Sidewalks (Re-Bid)  
Part A - ADA Improvements**



**North Side:**

Sawcut pavement and remove curb and sidewalk to construct concrete ramp (Type B) with curbing. Install detectable warning panel.

**South Side:**

Sawcut pavement and remove curb and sidewalk. Construct flush concrete landing area with concrete ramp (Type C) to the east with curbing. Install detectable warning panel in direction of travel across High Street.