

"REF MAP 286-7"

"REF MAP 290-1"

MARSH
TOWN OF HAMPTON

"REF MAP"
290-68

MOORING DRIVE

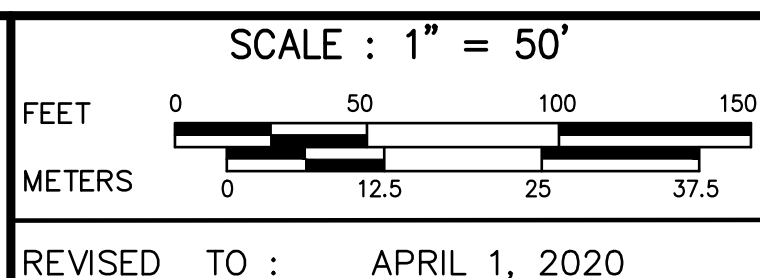
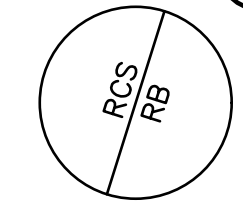
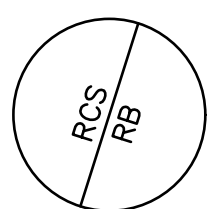
AUBURN AVENUE

HOBSON AVENUE

MANCHESTER STREET

31 0.09 A
32 0.09 A
33 0.07 A
34 0.06 A
35 0.06 A
36 0.06 A
37 0.06 A
38 0.06 A
39 0.09 A
40 0.08 A
41 0.07 A
42 0.06 A
43 0.06 A
44 0.07 A
45 0.07 A
46 0.07 A
47 0.09 A
48 0.11 A
49 0.11 A
50 2 A±
51 0.55 A
52 0.46 A
53 0.09 A
54 0.05 A

1 0.07 A
2 0.06 A
3 0.06 A
4 0.06 A
5 0.06 A
6 0.06 A
7 0.07 A
8 0.10 A
9 0.06 A
10 0.05 A
11 0.05 A
12 0.05 A
13 0.05 A
14 0.05 A
15 0.07 A
16 0.10 A
23 0.59 A
30 0.59 A



PROPERTY MAPS
HAMPTON
NEW HAMPSHIRE

INDEX	DIAGRAM	MAP NO.
285 286 287	GN	289
288 290		
291 292 293		

THIS MAP IS FOR ASSESSMENT PURPOSES ONLY.
IT IS NOT VALID FOR LEGAL DESCRIPTION OR CONVEYANCE.

THE ORIGINAL HORIZONTAL DATUM WAS THE NEW HAMPSHIRE STATE PLANE COORDINATE SYSTEM NAD 1927. PRIOR TO DIGITIZING, C.A.I. CONVERTED THE DATUM TO NAD 1983.

ORIGINAL PROPERTY MAPS WERE PREPARED BY G & UNDERWOOD ENGINEERS, INC. MAPS ARE REVISED AND REPRINTED BY CARTOGRAPHIC ASSOCIATES, INC.

PRODUCED IN 1996 BY

11 PLEASANT STREET, LITTLETON, NH 03561
800.322.4540 - WWW.CAI-TECH.COM

LEGEND

AREA 2.43 A OR 2.43 A±	BUILDING [Symbol]
DIMENSION 100'	BUILDING NUMBER 320
MATCH REFERENCE 78-2"	COMMON OWNERSHIP [Symbol] OR [Symbol]
RIGHT OF WAY [Symbol]	EASEMENT [Symbol]
POOL [Symbol]	WETLANDS [Symbol]
WATER [Symbol] OR [Symbol]	